

# tech. guide

Laboratory Information  
Systems, Operational  
Middleware

## Abbott Rapid Diagnostics Informatics, Inc.

Charlottesville, VA  
Steven Valorz (434-305-0347)  
www.rals.com

## AP-Visions LLC

St George Utah  
Neal Flora, managing director  
714-267-6844"

## AP-Visions LLC

St George Utah  
"Neal Flora: Managing Director  
714-267-6844"

1. What is the brand name of your company's laboratory information system (LIS), or operational middleware?

RALS

xLab

Patient Portal

2. What is the latest version of your named LIS or middleware?

Version 7.0.1; 2021 (US)

Version 20, released 2021

Version 1.0, released 2022

3. Specify the authorizing agency, type, and year of the product's regulatory authorizations or certified compliance with voluntary standards.

N/A

N/A

N/A

4. What is the intended use or primary function of the product?

RALS is used to electronically capture test results performed at the point-of-care (POC) and transfers patients result to an external system

Laboratory information system

Stand-alone patient portal that can be deployed for any LIS/EMR/EHR system. Ideal for Covid patient reporting including SMS Text, Email, and Qr Code

5. With which of the following systems or instruments is your system able to interface?

- bedside or handheld ID systems
- central data repositories
- electronic medical records
- hospital information systems
- molecular diagnostic instruments
- point-of-care instruments
- reference lab systems
- other

- electronic medical records
- hospital information systems
- laboratory automation systems
- microbiology instruments
- molecular diagnostic instruments
- point-of-care instruments
- practice management and billing systems
- reference lab systems
- other

N/A

6. If you answered "other," explain briefly.

Manual/lateral flow tests

N/A

N/A

7. On what operating system is your LIS or middleware based?

Windows Server 2016

Windows

Windows

8. What database system does your LIS or middleware use?

SQL Server

MySql

9. Briefly describe any automated features or options that pertain to the product..

Auto-recertification of point-of-care device operators

Automated transmissions of reports to: EMR/ EHR, printers, faxes, e-mail, patient portal, web portal, charges, etc.

Automated creation of OTP Code texted to patient, Email link and Qr Code to patient.

10. What is the typical training time for the product?

Varies depending on institution

3 days to 3 weeks depending upon the size of the lab

11. What types of technical support are available?

24/7 support via phone, email, and online video training resources.

Phone support

Phone Support

12. What capabilities, features, or accessories distinguish this product from others on the market (limit 350 characters, with spaces)?

Direct-to-device interfacing for the majority of devices in the connectivity menu; single point of control; vendor neutral, open system; range of eLearning solutions; on-demand training videos; online monthly webinars; on-location user groups.

Industry unique product deployment. Same person who installs, configures, and trains the customer also supports the customer. Unlimited remote facilities. PDF and MS Word sample attachments. Web portal, patient portal.

## Aspyra, LLC

Jacksonville, FL  
888-731-0731  
www.aspyra.com

## Beckman Coulter Diagnostics

Brea, CA  
714-993-5321  
www.beckmancoulter.com

## CompuGroup Medical

Phoenix, AZ  
800-359-0911  
www.cgm.com/us

## CompuGroup Medical

Phoenix, AZ  
800-359-0911  
www.cgm.com/us

CyberLAB	REMISOL Advance, REMISOL Advance V 2.1	CGM LABDAQ Laboratory Information System	CGM SCHUYLAB Laboratory Information System
7.3.1p1	ISO/IEC 27001. Confirm with Regulatory for any more	Version 21.3; October 2021	Version 3.4; January 2022
ONC HIT Certification	CE Mark, 2022	N/A	NA
Laboratory Information System	REMISOL Advance (RADV) is a data manager that simplifies and streamlines workflows in the laboratory. It is a central software component that connects the lab's analyzers, automation, and LIS to provide a real-time view of the testing life cycle that can be managed from the laboratory	Laboratory information system	Laboratory information system
<ul style="list-style-type: none"> <li>■ anatomic and digital pathology systems</li> <li>■ bedside or handheld ID systems</li> <li>■ blood banking</li> <li>■ central data repositories</li> <li>■ cytology systems</li> <li>■ electronic medical records</li> <li>■ hospital information systems</li> <li>■ laboratory automation systems</li> <li>■ microbiology instruments</li> <li>■ molecular diagnostic instruments</li> <li>■ point-of-care instruments</li> <li>■ practice management and billing systems</li> <li>■ public health surveillance systems</li> <li>■ reference lab systems</li> </ul>	<ul style="list-style-type: none"> <li>■ anatomic and digital pathology systems</li> <li>■ central data repositories</li> <li>■ electronic medical records</li> <li>■ hospital information systems</li> <li>■ laboratory automation systems</li> <li>■ reference lab systems</li> <li>■ other</li> </ul>	<ul style="list-style-type: none"> <li>■ electronic medical records</li> <li>■ hospital information systems</li> <li>■ laboratory automation systems</li> <li>■ microbiology instruments</li> <li>■ molecular diagnostic instruments</li> <li>■ point-of-care instruments</li> <li>■ practice management and billing systems</li> <li>■ reference lab systems</li> </ul>	<ul style="list-style-type: none"> <li>■ electronic medical records</li> <li>■ hospital information systems</li> <li>■ laboratory automation systems</li> <li>■ microbiology instruments</li> <li>■ molecular diagnostic instruments</li> <li>■ point-of-care instruments</li> <li>■ practice management and billing systems</li> <li>■ reference lab systems</li> </ul>
	Connectivity across wide variety lab instruments and LIS/EHR systems using standardized and proprietary interfaces.		
Windows	Windows 10, Windows Server 2012, Windows Server 2016, Windows Server 2019	Windows	Windows
SQL	Customized auto-verification rules, managing samples by exception to fast-track accepted results directly to LIS for reporting; Improved reliability via automated QC monitoring and alerts; integration of automation systems with other lab instruments. Daily SQL backup	MS-SQL	FairCom c-tree
Excel import for orders; MNV validation, patient receipt printing	Remisol rules engine which allow to automate many middleware user actions.	Automate result delivery via EMR, web, fax, or email. User-defined rules support billing, reflexing, autoverification, and order routing to specific labs based on insurance. Reports, data mining, and dashboards for analytics.	Electronically upload claims with automated billing. Automate result delivery via EMR, web, fax, or email. Automatically verify results as desired, route orders to specific labs, publish reports.
3 months	Ranging from several hours to several days. E-learning and On-site User training	1 to multiple weeks depending on the size of the install.	1 to 3 weeks depending on the size of the install.
24/7	Global customer support with Initial in-lab support for setup followed by in-lab, online and phone support.	Phone, email, or web portal; 24/7 support is available.	Phone or email; 24/7 support is available.
Integration capabilities with instruments and other systems, DOA reporting with medication reconciliation management, configurable to customer workflow	REMISOL Advance middleware improves efficiency within and across the laboratory network through workflow automation and standardization with easy to use tools.	Highly configurable, scalable, and intuitive; optimizes many types of facilities and consolidates in-house and reference lab testing results. Improves efficiencies with integration to EMR, billing, and reference labs. Manages specimen storage, inventory, workflows, and document review.	Integrated billing option eliminates manual data entry and need for separate systems. Cytology support. Multi-language support for bilingual or non-English labs. Expansive export feature uses common filetypes; supports analysis of QC, results, testing, business, and other data. User-friendly interface with customizable tests, panels, screens, etc.

**4medica, Inc.**

Marina Del Rey, CA  
424-289-2500  
www.4medica.com

**Haemonetics Corporation**

Boston, MA  
781-848-7100  
www.haemonetics.com

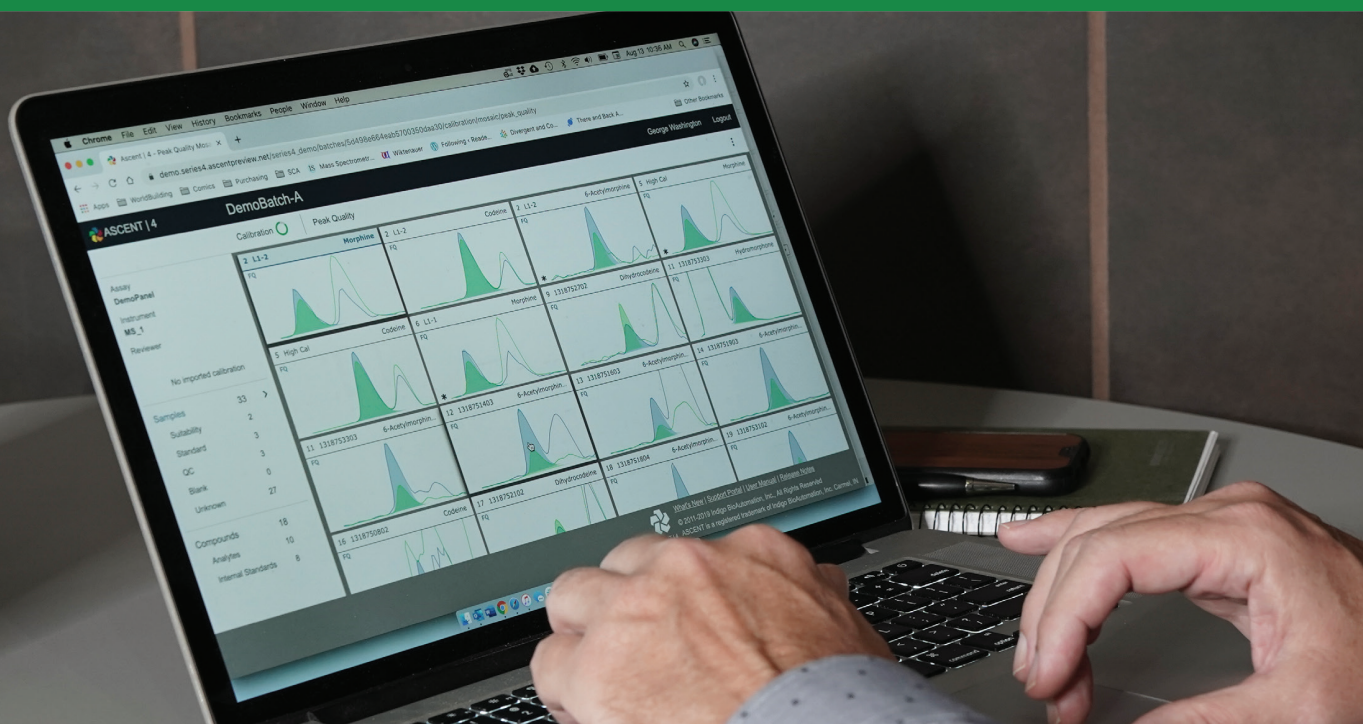
**hc1**

Indianapolis, IN  
317-219-4646  
www.hc1.com

**Indigo BioAutomation**

Carmel, IN  
317-493-2400  
www.indigobio.com

4medica Health Data Quality Exchange for Labs	SafeTrace Tx	hc1 Analytics	Ascent
Version 20.1; 2000	V4.6, 2022	2013	4.0; 2020
HITRUST, 2020	FDA 510(k), 2018	N/A	Listed with FDA since 2018; exempt from premarket authorization as a class 1 exempt device.
Cloud-based middleware and health data quality management platform that enhances electronic data exchange of clinical, pathology, imaging orders, and results; provides patient record verification and orders verification.		hc1 Analytics integrates lab data into a single platform to enable real-time access to actionable lab insights to manage volume, turnaround time, operational spend and workflows.	Software system that automates the processing, review, and release of clinical results from chromatography and mass spectrometry instruments, and other devices.
<ul style="list-style-type: none"> <li>■ central data repositories</li> <li>■ laboratory automation systems</li> <li>■ reference lab systems</li> <li>■ other</li> </ul>	<ul style="list-style-type: none"> <li>■ central data repositories</li> <li>■ laboratory automation systems</li> <li>■ reference lab systems</li> <li>■ other</li> </ul>	<ul style="list-style-type: none"> <li>■ blood banking</li> <li>■ central data repositories</li> <li>■ electronic medical records</li> <li>■ hospital information systems</li> <li>■ pharmacy systems</li> <li>■ reference lab systems</li> <li>■ other</li> </ul>	<ul style="list-style-type: none"> <li>■ central data repositories</li> <li>■ laboratory automation systems</li> <li>■ reference lab systems</li> <li>■ other</li> </ul>
Revenue cycle management services		Billing systems, courier systems, customer data lakes/data warehouses, call center systems.	Chromatography; mass spectrometry; LIS
	Microsoft Windows	Cloud-based - non-OS dependent	Windows; data interaction via a web browser, Windows, MacOS or Linux.
	Oracle or Microsoft SQL Server database	MySQL, Postgres SQL, DynamoDB, Snowflake	MySQL
Interfacing capabilities for automatic results to/from major LIS and EMR/ EHR systems. Automated RCM services such as pre-authorizations and real-time eligibility verification.		Lab Metrics Dashboards for lab volume, turnaround time and cost per test	Automated data upload after collection and results download after confirmation. Customizable quality rules automatically applied within and across the batch, including option to auto-assign rejection criteria.
1 to 2 hours of training for web-based orders and results portal application.	Dependent on site configuration.	1 session, generally 2-3 hours. Can be virtual or in-person	10 to 40 hours for routine tasks.
24/7 support via phone, email, self-service portal; live chat during normal business hours	For 24/7 on call software support	hc1 Technical Support policies and procedures can be found here: <a href="https://www.hc1.com/support/">https://www.hc1.com/support/</a> . Customer Care calls and emails are handled by a hc1 support analyst.	24/7 online support portal
Allows for easy client customization and is highly scalable. Encompasses all aspects of the test ordering process including verification of patient demographics and clinical order accuracy using a powerful integrated MPI-match process to ensure fast order processing, billing accuracy and improved collections.		Real-time connection to the LIS and/ or EMR enabling a proactive vs reactive approach to lab operations; 360° view of providers, patients, testing, operations; automated report delivery; reduced manual and time-intensive report development	Data agnostic across all major GS and LC-MS vendors, accelerating data review. Sophisticated algorithms to deconvolute noisy or overlapping peak complexity. Prior data can be queried for cross-batch quality review before results are released.



# ASCENT® | 4

*Process, review, and release GC/LC-MS results*

## Elevate your impact in the lab

Some of the largest clinical, toxicological, and reference laboratories performing quantitative chromatography and mass spectrometry use ASCENT to accelerate the release of high confidence results and gain additional insight.

Discover how powerful tools can take you **beyond the batch.**

- ✓ Simplify workflow
- ✓ Accelerate turnaround
- ✓ Visualize quality
- ✓ Instrument performance
- ✓ Data management
- ✓ Audit transparency



See the benefits for yourself:  
**[indigobio.com/ascent](https://indigobio.com/ascent)**

Questions | **317.493.2400** | **[ascent@indigobio.com](mailto:ascent@indigobio.com)**



## LigoLab Information Systems

Glendale, CA  
800-544-6522  
www.ligolab.com

## MediaLab, Inc.

Lawrenceville, GA  
877-776 - 8460; MediaLab.com  
sales@medialab.com

## Molecular Health

Heidelberg, Germany  
978-491-8393  
www.molecularhealth.co

## Nova Biomedical

Waltham, MA  
781-894-0800  
www.novabiomedical.com

LigoLab LIS & RCM Laboratory Operating Platform	MediaLab's Quality Management Solution	MH Guide	NovaNet
2021.4.12; January 2022	Versions specific to application, all applications continually updated; 2001	Ver 4.3; 2021	4.3.14.3 SP9; November 2020
N/A	FedRAMP, 2021; SOC II, 2022	CE mark, CLIA certified, CAP accredited	N/A
Laboratory Information System	Helps laboratories manage their quality and compliance activities, including streamlined management of laboratory documents, continuing education, training activities, POCT competency assessments, accreditation readiness, corrective actions, and more.	Analysis software that supports molecular pathologists and oncologists to determine treatment options based on genetic biomarkers.	Used to set up, configure, and monitor the technical status of specific point-of-care devices manufactured by Nova Biomedical.
<ul style="list-style-type: none"> <li>■ anatomic and digital pathology systems</li> <li>■ central data repositories</li> <li>■ cytology systems</li> <li>■ electronic medical records</li> <li>■ hospital information systems</li> <li>■ laboratory automation systems</li> <li>■ microbiology instruments</li> <li>■ molecular diagnostic instruments</li> <li>■ point-of-care instruments</li> <li>■ practice management and billing systems</li> <li>■ public health surveillance systems</li> <li>■ reference lab systems</li> <li>■ other</li> </ul>	<ul style="list-style-type: none"> <li>■ hospital information systems</li> <li>■ point-of-care instruments</li> <li>■ other</li> </ul>	<ul style="list-style-type: none"> <li>■ anatomic and digital pathology systems</li> <li>■ central data repositories</li> <li>■ electronic medical records</li> <li>■ hospital information systems</li> <li>■ molecular diagnostic instruments</li> <li>■ reference lab systems</li> </ul>	<ul style="list-style-type: none"> <li>■ bedside or handheld ID systems</li> <li>■ hospital information systems</li> <li>■ laboratory automation systems</li> <li>■ point-of-care instruments</li> <li>■ other</li> </ul>
Client portal, patient portal	Single sign-on connectivity		Blood gas analyzers, glucose meters, and other point-of-care meters
Mac OS, Microsoft (any that support Java)	Cloud-hosted SaaS solution (no local IT installation or hosting needed)	Offered as Software as a Service (SaaS)	Microsoft Server 2016 or 2019.
MS SQL	Cloud-hosted SaaS solution (no local IT installation or hosting needed)	SAP HANA	Integrated, proprietary build of Sybase SQLAnywhere.
Automates complex processes with rules and automation; manages operations and finances in an all-in-one platform that supports compliance and risk management with a comprehensive audit trail; features built-in artificial intelligence support for digital pathology; eliminates data silos and automates data integration; also features client notification and a report delivery engine.	Supports automated approval workflows, periodic reviews, employee attestations, CE and compliance course assignments, POCT competency assignment automation, and more.	Prefilters, annotates, and classifies genetic variants and identifies predictive, prognostic, and diagnostic biomarkers.	Bidirectional interfacing capability to all major laboratory information system and middleware providers, allowing for automatic upload of results and download of test orders and patient demographics.
30 to 60 days	Variable by software solution	4-hour guided remote or onsite training; training materials for self-study.	1 to 2 hours
24/7 technical support	Customer support is available by phone and email at support@medialab.com.	24/7/365 application and technical support via SLA: email, phone (10/7/365)	24/7/365 phone support within the United States; local dealers outside the United States.
A comprehensive enterprise-grade solution that all on a singular integrated software infrastructure that supports every role and empowers laboratories to better serve patients, differentiate themselves in the marketplace, scale their operations, become more compliant, and more profitable.	Offers 8 integrated solutions designed for healthcare professionals, by a team of healthcare professionals: Document Control, InspectionProof, Compliance & CE, POCT Compass, Personnel Documentation, IQE, Exam Simulators, Case Simulators"	MH Guide is vendor independent, assay agnostic, can be fully integrated in existing systems and processes, is highly automated, and provides very customizable reports in pdf and JSON format. Variant interpretations are in-house curated and reviewed by oncologists and molecular pathologists.	A proven, secure, and easy-to-use software tool that provides connectivity for as many as 100 device types from multiple vendors through partnerships with leading middleware vendors.



# 2022

Competitive Strategy  
Leadership Award

F R O S T & S U L L I V A N



Times Have Changed. Can Your Lab  
Software Keep Up?

## LigoLab: The next generation in intuitive and highly scalable software solutions for growing labs

Introducing **LigoLab LIS & RCM**, the only truly integrated laboratory operating platform that features infinitely configurable modules for AP, CP, MDx, RCM/Billing, and Direct-to-Consumer, all on a single shared database and software infrastructure.



One LIS system to manage  
all departments with no  
data silos



Supporting engines that  
maximize rules, automation,  
interoperability, and efficiency



Fully searchable audit trail  
with compliance verification  
at every stage

**LigoLab.com**

**1-800-LIGOLAB**



# tech. guide

## Laboratory Information Systems, Operational Middleware

1. What is the brand name of your company's laboratory information system (LIS), or operational middleware?
2. What is the latest version of your named LIS or middleware?
3. Specify the authorizing agency, type, and year of the product's regulatory authorizations or certified compliance with voluntary standards.
4. What is the intended use or primary function of the product?
5. With which of the following systems or instruments is your system able to interface?
6. If you answered "other," explain briefly.
7. On what operating system is your LIS or middleware based?
8. What database system does your LIS or middleware use?
9. Briefly describe any automated features or options that pertain to the product.
10. What is the typical training time for the product?
11. What types of technical support are available?
12. What capabilities, features, or accessories distinguish this product from others on the market?

### NovoPath

Bridgewater, NJ  
NovoPath.com

NovoPath 360 LIS Platform

N360

ISO 9001:2015 and SOC 2

LIS and Interoperability

■ anatomic and digital pathology systems  
■ laboratory automation systems

Automatic Intake and inventory mgmt, pathologist workflows, pre-built dashboards and reports, flagging for malignancy, cancer reporting, and custom categories Automatically attach outside results to report to render on the final integrated report"

1 week

24/7 support

100% SaaS-Based Platform including interoperability. Easy to use updated UI, intake to storage specimen tracking, digital pathology with AI, user based roles and configuration, TC/PC Support

### Psyche Systems Corporation

Hopkinton, MA  
Kyle Annderson & Michelle Austin  
508-372-8544; www.psychesystems.com

NucleoLIS

■ anatomic and digital pathology systems  
■ cytology systems  
■ electronic medical records

EMR, HL7, API, Built in Management Reporting, COVID Module

24 Hours

24x7x365

Is tailored to the unique workflows of laboratory-defined tests. NucleoLIS is a fully automated solution designed to support and manage the unique workflows and complex reporting requirements of the molecular and genetic lab, including DNA/RNA sequencing, PCR, FISH, karyotyping, immunology, pharmacogenomics, toxicology, and other laboratory-developed tests.

### Orchard Software

Carmel, IN  
800-856-1948  
www.orchardsoft.com

Orchard Point-of-Care

v9; 2021

N/A

POCT management and integration software

■ anatomic and digital pathology systems  
■ bedside or handheld ID systems  
■ blood banking  
■ central data repositories  
■ cytology systems  
■ electronic medical records  
■ hospital information systems  
■ laboratory automation systems  
■ microbiology instruments  
■ molecular diagnostic instruments  
■ point-of-care instruments  
■ practice management and billing systems  
■ public health surveillance systems  
■ reference lab systems  
■ other

Interfaces to any third-party information system

Windows

Microsoft SQL

Provides the ability to remotely interface POCT devices. System administrators can easily manage POCT menus, QC, and personnel.

1-week course

Phone, email, web support 24/7/365

An advanced POCT management and integration solution that provides remote management of all POCT activities across multiple locations, including device and operator competency assessment tracking. The solution transmits POCT results to the LIS/EHR, reducing manual entry errors and automating POCT billing.

Orchard Software	Paige	SCC Soft Computer	Sysmex America, Inc.
Carmel, IN 800-856-1948 www.orchardsoft.com	New York, NY 646-849-5088 www.paige.ai	Clearwater, FL 727-789-0100 www.softcomputer.com	Lincolnshire, IL 888-879-7639 www.sysmex.com/US/en/pages/default.aspx
Orchard Enterprise Lab	FullFocus	SoftLab LIS Suite	Caresphere Workflow Solution (WS)
v9; 2021	N/A	SoftLab LIS current release 4.5.8.x (Nov 2021)	V 1.4.1 Released to North America, 2022
N/A	FDA clearance, 2020; CE Mark, 2019	FDA 510(k) Class I, Class II (blood banking), 2015 Edition ONC HIT, MDSAP / ISO 13485:2016, ISO/IEC 27001: 2013 Certification	FDA Listing 2020, HITRUST CSF 2020
Laboratory information system	Software for viewing and managing digital images of scanned surgical pathology slides prepared from formalin-fixed paraffin-embedded tissue.	Laboratory Automation	Designed to assist in the organization and evaluation of patient test data. Caresphere WS is a HITRUST CSF-certified application hosted by Amazon Web Services.
<ul style="list-style-type: none"> <li>■ anatomic and digital pathology systems</li> <li>■ bedside or handheld ID systems</li> <li>■ blood banking</li> <li>■ central data repositories</li> <li>■ cytology systems</li> <li>■ electronic medical records</li> <li>■ hospital information systems</li> <li>■ laboratory automation systems</li> <li>■ microbiology instruments</li> <li>■ molecular diagnostic instruments</li> <li>■ pharmacy systems</li> <li>■ point-of-care instruments</li> <li>■ practice management and billing systems</li> <li>■ public health surveillance systems</li> <li>■ reference lab systems</li> <li>■ other</li> </ul>	<ul style="list-style-type: none"> <li>■ anatomic and digital pathology systems</li> <li>■ central data repositories</li> <li>■ laboratory automation systems</li> </ul>	<ul style="list-style-type: none"> <li>■ anatomic and digital pathology systems</li> <li>■ bedside or handheld ID systems</li> <li>■ blood banking</li> <li>■ central data repositories</li> <li>■ cytology systems</li> <li>■ electronic medical records</li> <li>■ hospital information systems</li> <li>■ laboratory automation systems</li> <li>■ microbiology instruments</li> <li>■ molecular diagnostic instruments</li> <li>■ pharmacy systems</li> <li>■ point-of-care instruments</li> <li>■ practice management and billing systems</li> <li>■ public health surveillance systems</li> <li>■ reference lab systems</li> <li>■ other</li> </ul>	<ul style="list-style-type: none"> <li>■ laboratory automation systems</li> <li>■ reference lab systems</li> <li>■ laboratory information systems</li> <li>■ other</li> </ul>
Interfaces to any third-party information system		Genomics variant databases (curated, discrete), flow cytometry instruments	hematology, urinalysis, HgbA1c, CellaVision, Sed Rate instruments
Windows	Cloud-based	Linux, AIX, or Cloud-based	CentOS 7 Linux
Microsoft SQL	Cloud-based	Oracle	PostgreSQL
Designed with maximum flexibility and configurability to support unique workflows across various laboratory scenarios. Can assist with lab requirements from interfacing, automation, and POCT.	Web-based software-only medical device that displays digitized pathology slides; intended to be used for viewing, management, and interpretation of the images in performing primary diagnoses.	Fully automated system including: Autoverification, auto-test-routing, workstation re-direction, rules engine, workflow engine, specimen tracking, billing rules, storage and retrieval automation, blood bank unit dispensing, advanced integration with lab robotics.	Rules system support of negative sample autoverification. Full integration with CellaVision. Clinical decision support for positive samples.
1-week course	1 hour	Varies from 1-week to several weeks	7 hours
Phone, email, web support 24/7/365	Level 1 support at support@paige.ai. Live support is available 8:00 AM to 6:00 PM US EST.	24/7/365 support with service level agreement for emergency, priority, and standard requests as classified by client.	24/7 phone or email hotline; online training, project management and application consultation specialists.
An enterprise-class laboratory information system that incorporates advanced tools and decision support to measure performance, improve productivity, and generate valuable business analytics. Our enterprise LIS is designed to support high-volume, complex laboratories.	Highly performant to enable seamless navigation of the large whole slide images and has been designed with pathologists so that the experience is unique and consumer grade. FullFocus is an FDA-cleared cloud-native viewer with optimized performance for remote and on-premises deployments.	Next-generation LIS/LIMS platform with fully integrated LIS/Pathology/BloodBank/Genetics modules. No third-party middleware needed for instrument connectivity. Seamless specimen management and chain-of-custody, multi-site and multi-time-zone capable. Complete LIMS capabilities for public health, environmental, toxicology, and other areas.	Cloud-based platform with HITRUST CSF certification. Large scalability options to accommodate any size facility or IHN. Customizable rules designed to take advantage of available platform technologies. Ability to customize automation movement and actions. Provides user direction and instruction based on all positive samples for all positive samples.



# tech. guide

Laboratory Information  
Systems, Operational  
Middleware

## TELCOR

Lincoln, NE  
866-489-1207  
www.telcor.com

## Visiun

Burlington, NC  
877-226-6356  
www.visiun.com

## Visiun

San Diego, CA  
Joseph Nollar, AVP of Product  
Development,  
858-436-9596, www.xifin.com

1. What is the brand name of your company's laboratory information system (LIS), or operational middleware?

TELCOR QML

Performance Insight®

XIFIN LIS

2. What is the latest version of your named LIS or middleware; what year was this version first released to market?

2.3.32/Feb 2022 which includes 48 new or enhanced device types since 2020.

Version 17, 2021

Version 8 (2021)

3. Specify the authorizing agency, type, and year of the product's regulatory authorizations or certified compliance with voluntary standards.

FDA Class I Exempt

N/A

SOC1, SOC2, CAP, CLIA

4. What is the intended use or primary function of the product?

Consolidates and manages all aspects of a point of care testing program. .

Provides laboratory managers with a comprehensive suite of analytics.

AP, CP, toxicology, molecular, NGS, clinical trials

5. With which of the following systems or instruments is your system able to interface? (

■ bedside or handheld ID systems  
■ central data repositories  
■ electronic medical records  
■ hospital information systems  
■ molecular diagnostic instruments  
■ point-of-care instruments  
■ other

■ anatomic and digital pathology systems  
■ bedside or handheld ID systems  
■ blood banking  
■ central data repositories  
■ cytology systems  
■ electronic medical records  
■ hospital information systems  
■ laboratory automation systems  
■ microbiology instruments  
■ molecular diagnostic instruments  
■ point-of-care instruments  
■ reference lab systems  
■ other

■ anatomic and digital pathology systems  
■ central data repositories  
■ cytology systems  
■ electronic medical records  
■ hospital information systems  
■ laboratory automation systems  
■ microbiology instruments  
■ molecular diagnostic instruments  
■ point-of-care instruments  
■ practice management and billing systems  
■ public health surveillance systems  
■ reference lab systems

6. If you answered "other," explain briefly.

Interfaces to Learning management system, HR information system for operator management and competency documentation.

Extracts provided for all major LIS, no HL7 interface required

7. On what operating system is your LIS or middleware based?

Server 2012, 2016 and 2019

Windows

XIFIN LIS 8 is a cloud based system accessed via standard web browsers

8. What database system does your LIS or middleware use?

Sybase SQL Anywhere for the main QML database and SQL Express/SQL Server for transactional data.

Microsoft SQL Server

SQL

9. Briefly describe any automated features or options that pertain to the product.

ADT/order interfaces for patient validation, order selection to automate solicited/unsolicited result interfaces, operator creation, eLearning interface to automate operator certifications, alerts with email/text messages to system updates, operator lists/configurations to devices, dashboard for system processing status, automated device setup.

Automatic data import, report scheduling, report exceptions, automatic email distribution of analytic reports

Integration with your labs medical devices allows for automated integration of results. System can be configured to auto-release normal results. Batch processing (accessioning, instrumentation, results) allows for a more streamlined workflow.

10. What is the typical training time for the product?

Varies based on complexity and device types commented; generally, three formal, two-hour sessions.

Half a day on-site training followed by web training as necessary

2-3 days for each user category

11. What types of technical support are available?

24/7/365

Dedicated support by medical technologists with years of lab experience

Phone support- M-F 6:00-7:00 PST. Online support 24-7.

12. What capabilities, features, or accessories distinguish this product from others on the market (limit 350 characters, with spaces)?

Open POC testing system not owned or managed by a device/LIS vendor. First learning management system interface. Single version philosophy; all product enhancements at no additional cost. Most connected device types. Perpetual license. Customer retention rate of 97% since 2001. Multiple workflows within the same system.

Local install so data never leaves the hospital and is not web-hosted. User can run reports as needed to make operational, performance, utilization, and quality decisions in the lab without having to rely on IT. Analytics cover key areas in the lab including general, blood bank, and AP.

No major hardware or software purchases or upgrade fees. XIFIN products include: LIS/LIMS, revenue cycle management, BI, and consult/collaboration. Tools that extend the value of lab services to the entire care team. Tailored modules and logic driven reports including Summary and TCPC reporting.



COLA's Pathology criteria reflect the CLIA requirements for Pathology and align with recent advances in science and technology of Pathology testing. COLA's laboratory accreditation provider meets the **ISO 9001** standard for quality management and customer satisfaction. Our goal is simple: to help you provide quality patient testing.

## Advantages of COLA's Pathology Accreditation

### 1) Staff Expertise

Administrators with an average of 35 years experience and continuous training for COLA Surveyors

### 2) Efficient & Consistent Surveys

Non-reciprocal, team survey model with subject matter experts

### 3) Management Resources on Regulatory Compliance

- Easy accessibility to Pathology subject matter experts
- Online COLAcentral<sup>®</sup> portal allows customers to access and update laboratory information at any time
- Numerous Primers containing regulatory guidance
- Customizable, record-keeping forms and templates

### 4) Seamless Switch

Transition Team for smooth and orderly switch to COLA



(800) 981 - 9883



cola.org

### Why you want to switch to COLA



99% of customers polled feel COLA's accreditation program meets or exceeds expectations



100% of customers polled feel COLA Surveyors pose minimal disruptions



Over 90% of customers polled feel survey processes are consistent